



TOWN OF
PEACE RIVER
ALBERTA



Summary for August 16 to September 15, 2024

Our TEAM

Apex Security Inc. Public Security Unit (PSU) A specialized team of security personnel responsible for maintaining public order, preventing crime, and responding to emergencies.

We have built a strong relationship with the community and local businesses, receiving highly positive feedback that highlights the value of our work. As the community has grown more familiar with our presence, their increased involvement has led to greater engagement and collaboration.

The Public Security Unit (PSU) commenced operations in Peace River on July 15, 2024. Since then, we have worked closely with local authorities and the public to improve safety and address concerns. Upon our arrival, we immediately established essential communication channels with key stakeholders, including the RCMP, EMS, Fire Department, Town Council members, and local businesses such as the Mall Manager, Campgrounds, local businesses, and Hotels. This proactive approach was instrumental in building trust and fostering a strong relationship within the community. We have also reached out to the Sagitawa Friendship Centre and look forward to fostering a collaborative relationship with them. Now that the PSU has been operating in Peace River for two months, the community has become more aware of our role, resulting in increased cooperation. We have received numerous reports from the public regarding encampments and suspicious activity, demonstrating heightened community involvement.

Our initial focus has been on clearing encampments, addressing loitering on public properties, reducing criminal activity, and implementing preventive measures. We have consistently supported the RCMP, Fire Department, and EMS in various situations, ensuring that our presence is seen as a valuable asset to the community. Key areas of focus include Riverfront Park, Main Street, River Drive Mall, Peace River Museum, and several other locations around town. After these first couple of months, our team has gained a strong understanding of where abandoned encampments tend to reappear, and continuous patrols in these areas are essential to keeping them clear.

We have established regular patrols to monitor known encampment sites, including the Buchholtz Financial, Train Bridge, River Front, and other identified areas. During these patrols, we ensure the safe disposal of needles, garbage, and any potential weapons, contributing to both the cleanliness and safety of the town.

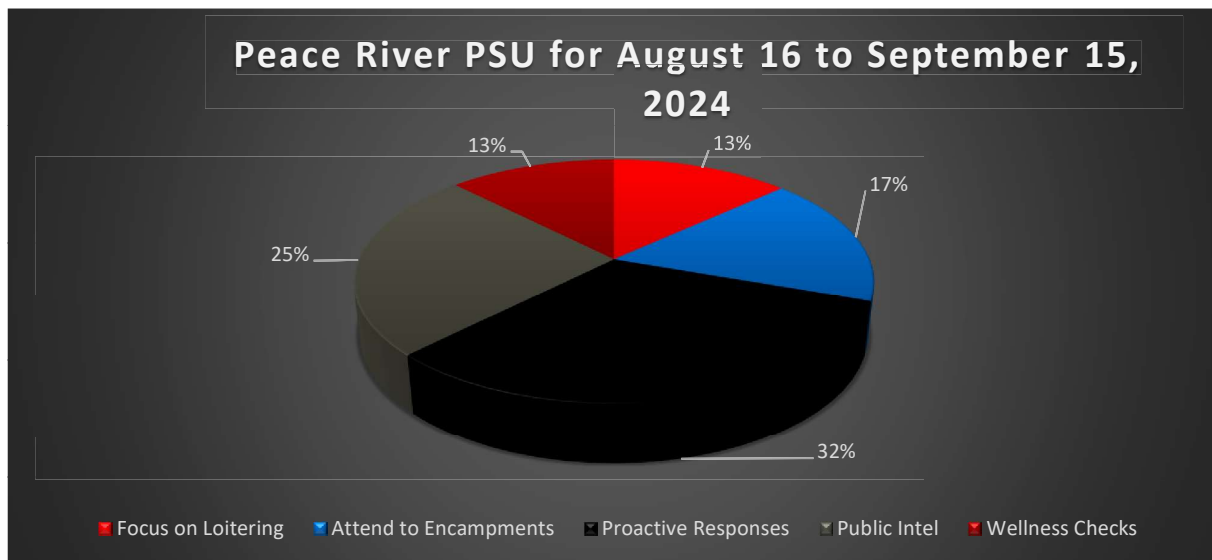
Our visible efforts in maintaining public safety, coupled with our ongoing engagement with the community, have been a cornerstone of our strategy to establish the PSU as a trusted and effective entity in Peace River. Our support extends to community events, where we have provided foot patrols during carnivals, River Days, summer camps for children, and other downtown activities. Additionally, we have assisted business managers in handling problematic individuals and have supported the RCMP upon request.

The PSU's presence in Peace River has significantly enhanced the town's safety and cleanliness. By building strong relationships with local authorities and actively engaging the public, we have addressed critical issues and contributed to the well-being of the community. Our ongoing efforts and collaboration will continue to reinforce these improvements, showcasing the positive impact of the PSU's work.

Monthly Activity Overview

Encampments	44 occurrences, with a focus on removal and clean up. Proactive measures were taken to monitor areas frequently affected.
Loitering	33 occurrences, mostly involving alcohol consumption and unauthorized gatherings. Efforts were made to disperse groups and enforce regulations.
Suspicious Activity	42 occurrences, involving monitoring and intervention. No major incidents reported but included observations and proactive Measures
Wellness Checks	33 occurrences, with timely responses to medical emergencies and assistance required.
Proactive Patrols	686 occurrences, demonstrating a consistent and extensive presence in various areas to ensure community safety. (includes observations and proactive measures.)
Public Intel	63 reports, addressed based on community tips and concerns, including noise and suspicious activity.

Chart for PSU



Focus on Loitering:

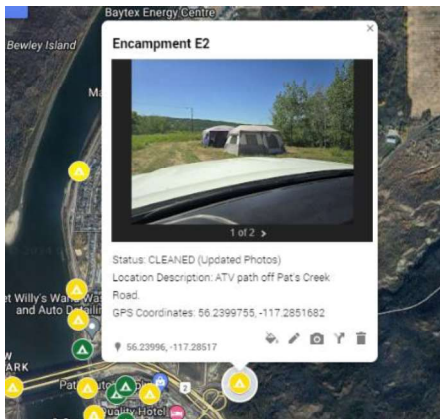
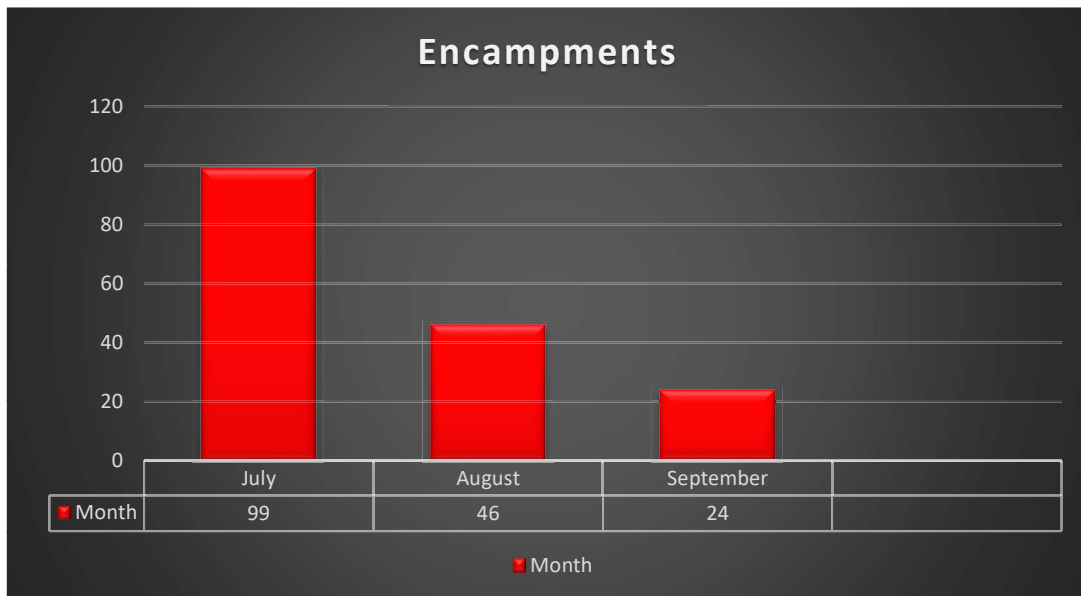
Percentage: 13%

Insight: Loitering has decreased, but the team attributes this to removing individuals after multiple warnings, labeled “removal” in stats. This indicates that a significant part of the PSU’s efforts focuses on managing public spaces where loitering and removals occur, often resulting in related challenges such as public intoxication or the establishment of encampments.

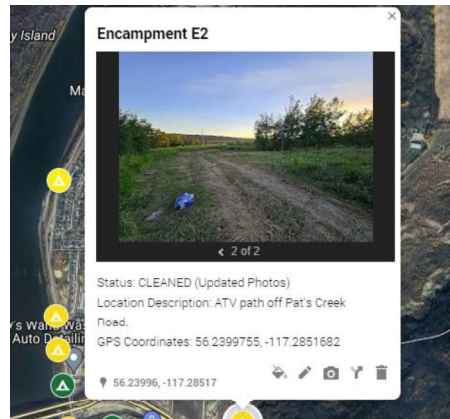
Attention to Encampments:

Percentage 17%

Insight: Encampments constitute a substantial part of the PSU's work. The emphasis on managing and clearing encampments shows a focus on addressing homelessness and unauthorized encampments on public property, which can be crucial for maintaining public safety and cleanliness.



Before Clean-up



After Clean-up

Proactive Response to Suspicious Activity:

Percentage: 32%

Insight: A significant portion of the PSU's activities involve responding to suspicious behavior. This reflects a proactive approach to preventing potential crimes or addressing unusual activities in the community.

Wellness Checks:

Percentage: 13%

Insight: Though a smaller part of PSU's activities, wellness checks play a vital role. They demonstrate PSUs to ensure the safety and well-being of individuals in distress or need of medical assistance.

Public Intel:

Percentage: 25%

Insight: The PSU team has been proactive in responding to public intelligence. Community involvement has increased significantly since initiating patrols in Peace River, with 63 calls received in the past 30 days. This demonstrates that, while it constitutes a smaller portion of the PSU's overall work, responding to tips and concerns from the public continues to be a vital part of their operational duties.

Summary of Focus Areas

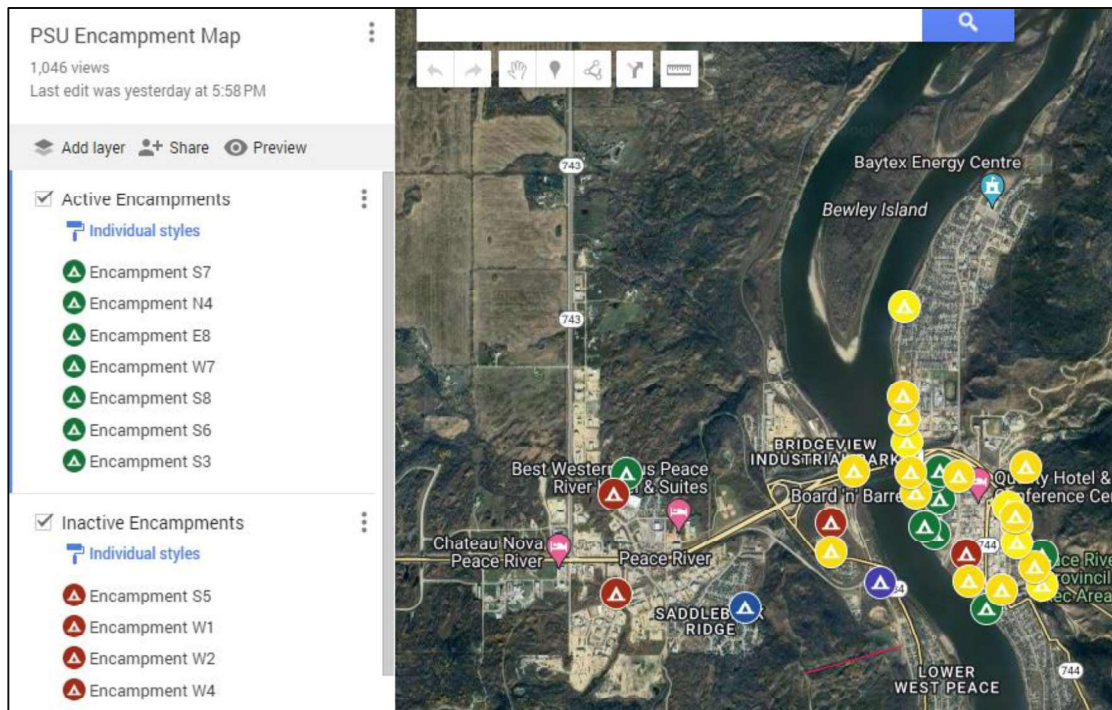
The PSU's efforts are primarily divided among, managing loitering (13%), clearing encampments (17%), and responding to suspicious activities (25%). Wellness checks and public intel each make up 38% of the PSU's activities, reflecting a balanced approach to community safety and well-being.

During the first 15 days of September, the Public Security Unit (PSU) observed a shift in encampment activity, primarily due to cooler evening temperatures. While there was a notable decrease in encampments during the transition from August to early September, this trend may reverse as colder weather sets in. In July and August, the PSU conducted over 100 visits to known encampment sites, discovering new ones through community intel. By early September, this number dropped to 24 visits. The PSU team remains vigilant and will continue monitoring the situation closely, anticipating an increase in encampments as winter approaches. Cooler evenings typically drive more individuals to seek shelter in unconventional spaces, such as bank entrances, hotel lobbies, and public buildings, and we expect this trend to continue as temperatures drop further.

In addition to addressing encampments, and dealing with loitering, the PSU has focused on various community safety initiatives. Their proactive approach included monitoring high-risk areas, responding to medical emergencies, and addressing unauthorized gatherings. The team also tackled community concerns such as noise and suspicious activity, maintaining a strong emphasis on public order and safety.

Overall, the PSU's consistent patrols and strategic interventions have significantly contributed to a safer community environment, with a clear impact on reducing encampments and enhancing overall public security.

Encampment Map



Developed by the PSU, the Encampment Map is designed to streamline efficiency, safety, and resource management. By providing real-time, color-coded status updates of encampments, it enables swift, informed responses that enhance operational efficiency. GPS coordinates ensure precise location tracking, which improves safety by facilitating accurate dispatch of PSU guards and Emergency Services. The map also optimizes resource allocation by clearly identifying the status of encampments and aiding in better management and cleanup efforts through detailed documentation and photographic records. Overall, this innovative tool significantly enhances the efficiency of encampment management and improves safety and security for the community.

Encampment Map Details

The Encampment Map is a Google Maps-based platform developed to facilitate the tracking of encampment locations, campus status, site descriptions, and GPS coordinates in instances where a physical address is not available. Tent icons are utilized on the map to indicate where an encampment has been identified or where there is a suspicion of an encampment. These icons are color-coded to allow for an immediate and clear understanding of the status of each encampment.

- **Green icons** signify **ACTIVE** encampments, indicating recent activity within the past seven (7) days. New activity includes items being added, removed, or repositioned, person(s) being seen at the location interacting with the encampment, and other signs signifying that the encampment is still being used.
- **Red icons** signify **ABANDONED** encampments, indicating an absence of activity for at least seven (7) days. This means no new items have been added, removed, or repositioned and no person(s) have been seen at the encampment within the last 7 days. Notices can be provided at the encampment location stating that the remaining items will be disposed of if not collected within a specified time.

- **Blue icons** represent **POSSIBLE** encampments, which refer to locations where there has been a report of an encampment, but the existence of such has not been confirmed due to either an inability to locate or verify the encampment during the initial investigation or pending permission from the property owner to access the premises for further investigation.

- **Yellow icons** indicate encampments that have been vacated and all items have been removed, which includes the removal of tents, garbage, debris, and other abandoned items. Encampments are scheduled for cleanup after the encampment is deemed **ABANDONED** and if required, cleanup crews are organized to attend.

Location descriptions, along with GPS coordinates, are documented and incorporated into the Encampment Map to provide authorized users with precise information regarding the locations of encampments. In instances where encampments are situated in wooded areas or locations lacking a physical address, GPS coordinates are provided for additional clarity. These GPS coordinates also enable the Apex Security Dispatch Centre to accurately determine the location of PSU Guards, particularly in situations where an incident occurs, and Emergency Services need to be dispatched to the scene increasing guards' safety during encampment patrols.

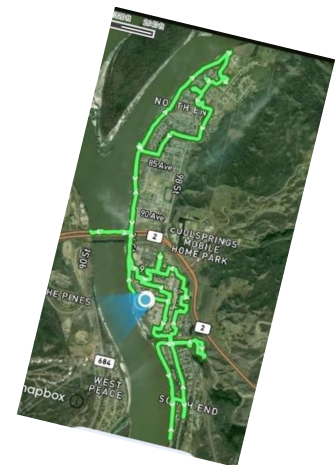
Additionally, photographs are taken of each encampment to assist in the identification of specific locations and to document their current condition. Post-cleanup photographs are also captured to provide a visual comparison of the site before and after remediation efforts. In the event that an encampment is removed but subsequently reappears at the same location, new photographs are taken to document the recent activity, and the status of the encampment is updated to reflect its reclassification as **ACTIVE**.

Further details may be included in the description of each encampment, such as the number of individuals residing at the location, threat levels (particularly if guards have encountered consistent hostile behavior during visits), cleanup dates, and other relevant information. These supplementary details may be incorporated at the request or direction of the town, city, or municipality, as required.

Patrol Vehicle Daily Kilometers Summary

Over the course of 30 days, from August 16th to September 15th, the Public Security Unit (PSU) patrol vehicle logged a total of 6,441 kilometers. This vehicle is essential to the PSU's operations, providing a visible and mobile presence throughout the community. The patrol vehicle is used by our PSU team to respond to incidents, monitor high-risk areas, and conduct routine patrols aimed at deterring criminal activity and ensuring public safety.

On average, the PSU team drives approximately 215 kilometers per day, covering a wide range of areas to maximize their presence and effectiveness. This consistent patrolling plays a crucial role in enhancing the safety and security of the community by allowing quick response times and increasing visibility in neighborhoods, business districts, and other key locations.



PSU Bike Patrol Route

PSU Activities and Achievements



The Apex Security Public Security Unit (PSU) has rapidly established itself as a vital component of the community's safety infrastructure within the first month of operation. Our focus has been on creating a visible and accessible presence, building strong relationships with local authorities and residents, and making a tangible impact on the community's well-being. Through dedicated efforts, we have not only enhanced public safety but also contributed significantly to environmental cleanliness and community engagement. The following key achievements and ongoing efforts highlight the strides we've made and our continued commitment to serving Peace River effectively.

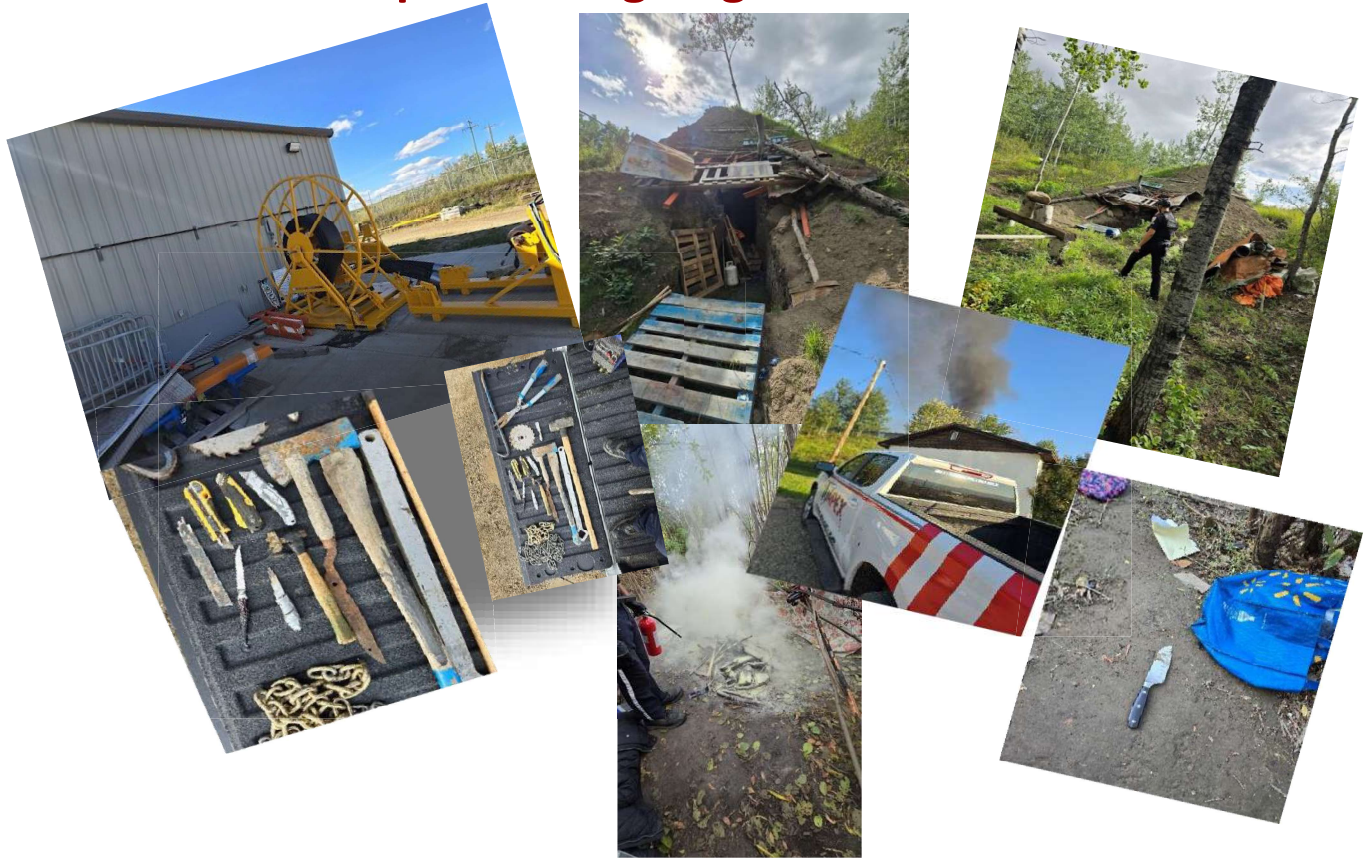
Key Achievements

- **Addressing Loitering:** Proactively managed and addressed loitering issues on town-owned properties and public spaces, ensuring public order and reducing disturbances.
- **Tackling Criminal Activity:** Actively intervened in and responded to criminal behavior and incidents, significantly enhancing community safety.
- **Implementing Proactive Measures:** Implemented preventative strategies, including increased patrols and community engagement, to address issues before they escalate.
- **Visible Presence:** Deployed a branded patrol vehicle, making the PSU easily recognizable and providing a consistent and reassuring presence throughout the community. Our efforts extend to regular foot/ bike patrols in the downtown area, as well as coverage of walking paths and parks, further enhancing public safety.

- **Development of the Encampment Map:** a dynamic Google Maps-based platform that provides real-time tracking, status updates, and GPS coordinates of encampments, enhancing accuracy and coordination for cleanup and response efforts.
- **Community Outreach:** Distributed over 250 business cards with PSU contact information, strengthening connections with local businesses and residents, and improving accessibility to our services.
- **Enhanced Patrols:** Introduced two e-bikes to improve patrol coverage in parks and along walking paths, allowing for quicker response times and greater mobility in challenging areas.
- **Public Awareness:** Installed informative signage in parks and walkways, providing clear instructions for contacting the PSU and actively engaged with residents to explain our role and duties, enhancing overall public safety and awareness.
- **Cleaning up Encampments:** Effectively removed temporary or unauthorized encampments from various locations, contributing to both cleanliness and safety.



Impact & Ongoing Efforts



- **Environmental and Safety Impact:** In collaboration with public volunteers, we have removed over 186 cubic meters of garbage from encampments and public spaces. Additionally, our efforts have led to the removal of numerous hazardous items, including tools, weapons, knives, drugs, and needles, further enhancing community safety.
- **Community Feedback:** Received overwhelmingly positive feedback from residents and businesses, reflecting growing trust and confidence in the PSU's role in enhancing public safety.
- **Comprehensive Support:** Established robust partnerships with local authorities, including RCMP, EMS, and the Fire Department, allowing us to assist in various emergencies and community needs.
- **Proactive Patrols:** Conducted regular patrols in high-priority areas, including parks, business districts, and known encampment locations, to deter criminal activity, assist residents, and maintain a visible security presence.
- **Responsive Services:** Actively responded to incidents, including loitering and unauthorized encampments, while collaborating with local agencies to address broader safety concerns.
- **Engagement & Education:** Engaged with the community to educate residents and businesses on safety practices, while continuously adapting our services based on community needs and feedback.

Conclusion

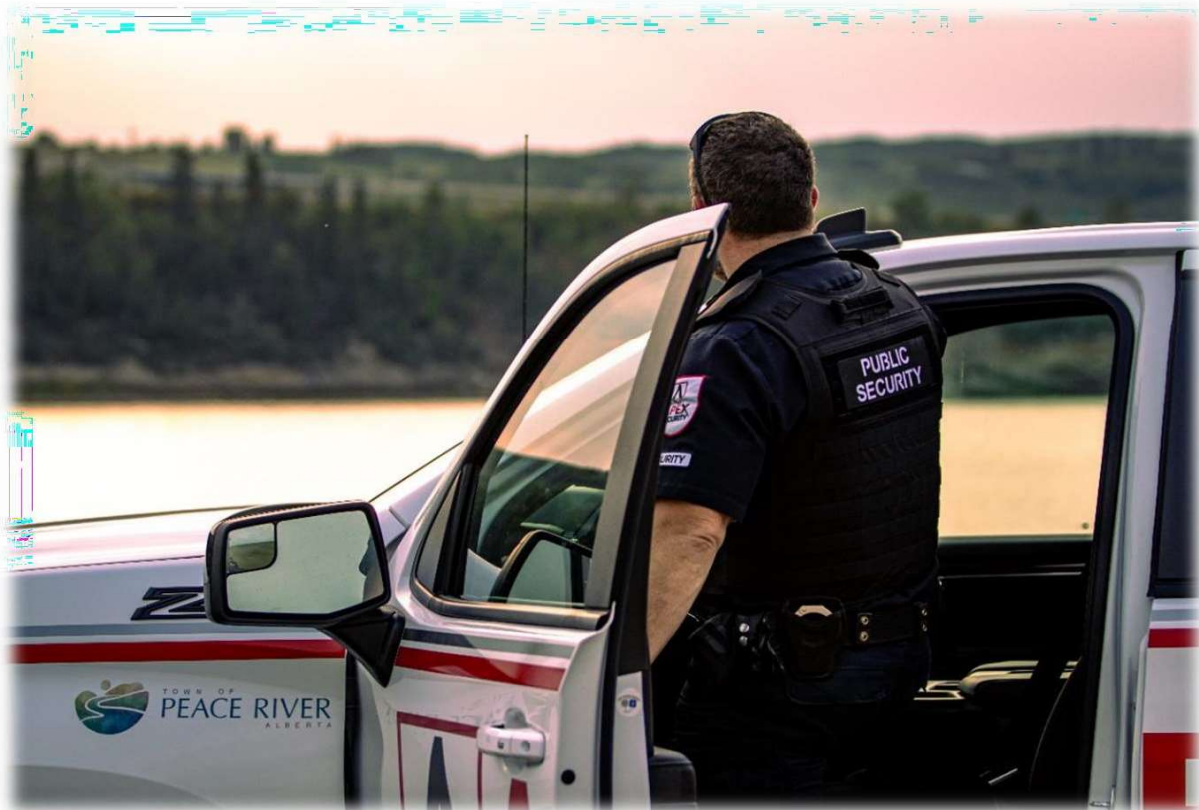
In conclusion, the Public Security Unit (PSU) has made a notable impact in Peace River during its two months of operation. Through our proactive and highly visible patrols—strengthened by the addition of e-bikes and branded patrol vehicle—we have served as an effective deterrent to criminal activity, providing a continuous and reassuring 24-hour presence. This visibility has been met with positive feedback from community members and local businesses, who feel more secure and supported.

Our encampment management efforts have led to the removal of hazardous items, including tools, weapons, drugs, and needles, ensuring safer public spaces. With the help of community volunteers, we've cleared over 186 cubic meters of waste, making a significant improvement to the cleanliness and safety of the town.

We have been an active partner to local businesses, providing assistance and maintaining a consistent presence downtown through foot patrols, particularly during key events. This hands-on engagement has fostered strong relationships and reinforced our commitment to the well-being of the community.

Additionally, we have focused on the well-being of the street population, distributing pamphlets outlining available support services, and offering guidance for those seeking help. We've developed strategies to manage individuals causing disturbances, working with them positively while addressing community concerns.

As we continue our efforts to address pressing issues, we remain committed to enhancing the safety, cleanliness, and overall well-being of Peace River. The positive reception from the community inspires us to build on these successes and continue serving as a dedicated resource for both the public and vulnerable populations.





OUR FAMILY SECURING YOURS

Vision

"To strengthen community safety in Peace River by providing vigilant security and fostering collaboration with local businesses and the community, ensuring a secure and thriving environment for all"

Mission Statement

"Apex Security's primary purpose is to enhance community safety and security by delivering reliable, proactive, and responsive security services that protect people, property, and businesses. We are dedicated to building safer environments through innovative solutions and strong partnerships with local communities."

Prepared by: Darcy Chamberlist

Approved by: Remi Nault

Date: September 16th, 2024



**Head Office and
Dispatch
9916 100 Avenue
Grande Prairie, Alberta
780-830-0288**

**Service & Training
Centre
10702 100 Street
Grande Prairie, Alberta**

**Branch Office Peace
River
10501 77th Street
Peace River, Alberta
780-624-9574**