



TOWN OF
PEACE RIVER
ALBERTA



Summary for July 15 to August 15, 2024

Our TEAM

Apex Security Inc. Public Security Unit (PSU) A specialized team of security personnel responsible for maintaining public order, preventing crime, and responding to emergencies.

We are pleased with the positive reception the Public Security Unit (PSU) has received during its first month of operation. The feedback from both the public and business interactions has been very encouraging. As the community becomes more familiar with our services, we anticipate continued growth in engagement.

The Public Security Unit (PSU) began operations in Peace River on July 15th, 2024. Since then, we have actively engaged with local authorities and the community to improve public safety and address various concerns. Upon arrival, we immediately established essential communication channels with key stakeholders, including the RCMP, EMS, Fire Department, Town Council members, and local businesses such as the Mall Manager and Hotels. This proactive engagement was crucial in building trust and understanding within the town. We have also reached out to the Sagitawa Friendship Centre and are looking forward to their response as we aim to build a collaborative relationship with them.

Our initial efforts have focused on cleaning up encampments, addressing loitering on town-owned properties and public spaces, tackling criminal activity, and implementing proactive measures. We have consistently supported the RCMP, Fire Department, and EMS in various situations, ensuring that our presence is a valuable addition to the community. Specific areas where our efforts have been concentrated include Riverfront Park, Main Street, River Drive Mall, Peace River Museum, and several other key locations across town.

Regular patrols have been established to keep known encampments clear, including those at the Anglican Church Cemetery, Train Bridge, and other identified areas. We also ensure the safe disposal of needles, garbage, and any potential weapons found during our patrols, contributing to the overall cleanliness and safety of the community.

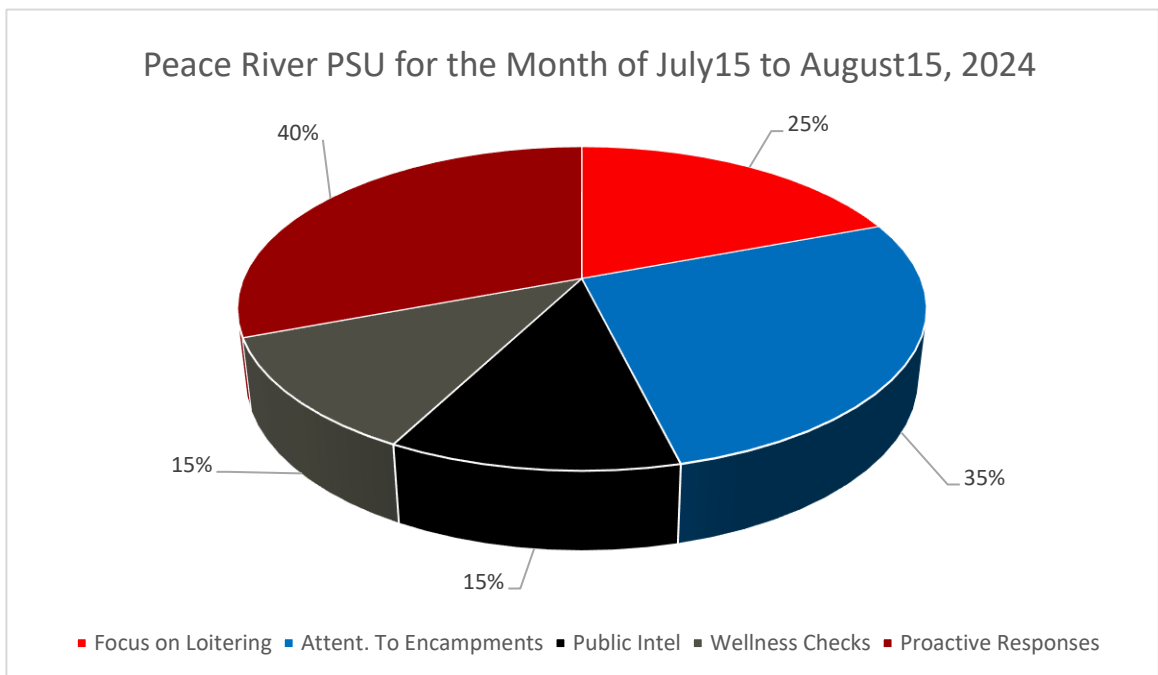
Our ongoing engagement with the community, coupled with our visible efforts in maintaining public safety, has been a key component of our strategy to establish the PSU as a trusted and effective presence in Peace River. Our support extends to community events, where we have provided foot patrols during carnivals, River Days and other downtown activities. Additionally, we have assisted business managers with problematic individuals and offered support to the RCMP when requested.

The PSU's presence in Peace River has significantly contributed to the safety and cleanliness of the community. By establishing strong relationships with local authorities and actively engaging with the public, the PSU has been able to address critical issues and support community well-being. Our continued efforts and collaboration aim to maintain and enhance these improvements, demonstrating the value and impact of the PSU's work.

Monthly Activity Overview

Encampments	119 occurrences, with a focus on removal and clean up. Proactive measures were taken to monitor areas frequently affected.
Loitering	25 occurrences, mostly involving alcohol consumption and unauthorized gatherings. Efforts were made to disperse groups and enforce regulations.
Suspicious Activity	26 occurrences, involving monitoring and intervention. No major incidents reported but included observations and proactive Measures
Wellness Checks	26 occurrences, with timely responses to medical emergencies and assistance required.
Proactive Patrols	689 occurrences, demonstrating a consistent and extensive presence in various areas to ensure community safety. (includes observations and proactive measures.)
Public Intel	45 reports, addressed based on community tips and concerns, including noise and suspicious activity.

Chart for PSU



Focus on Loitering:

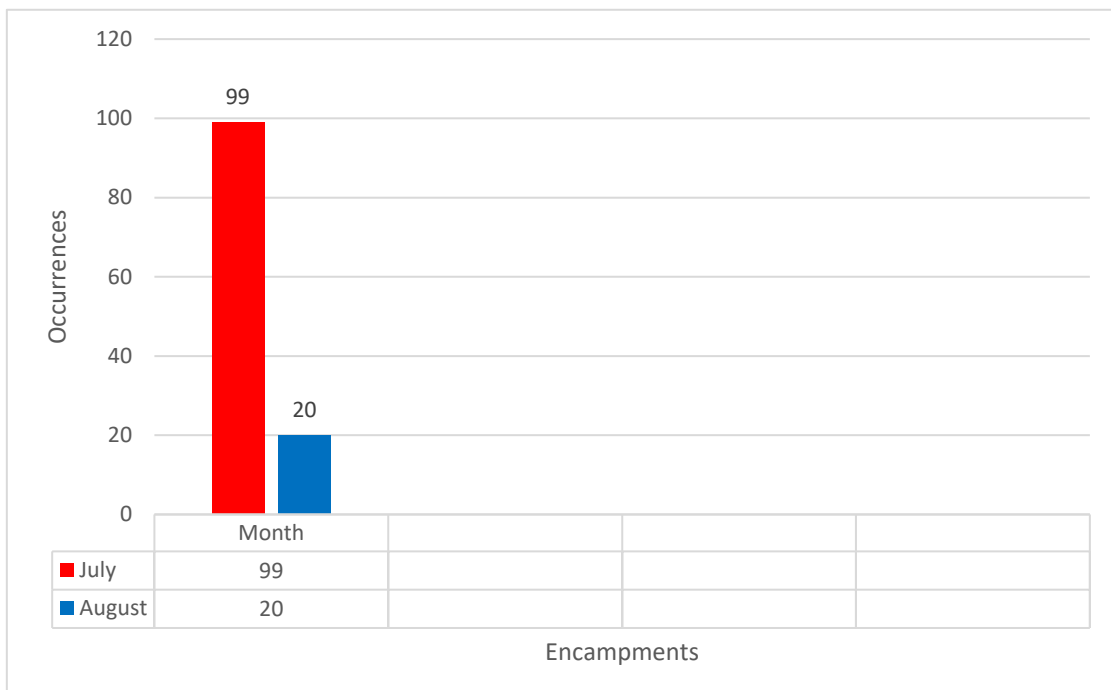
Percentage: 25%

Insight: The highest percentage of incidents involves addressing loitering. This suggests that a significant portion of the PSU's efforts is directed at managing public spaces where individuals are loitering, often leading to further issues like public intoxication or encampments.

Attention to Encampments:

Percentage 35%

Insight: Encampments constitute a substantial part of the PSU's work. The emphasis on managing and clearing encampments shows a focus on addressing homelessness and unauthorized encampments on public property, which can be crucial for maintaining public safety and cleanliness.



Proactive Response to Suspicious Activity:

Percentage: 40%

Insight: A significant portion of the PSU's activities involve responding to suspicious behavior. This reflects a proactive approach to preventing potential crimes or addressing unusual activities in the community.

Wellness Checks:

Percentage: 15%

Insight: Wellness checks are a smaller but important part of the PSU's activities. The presence of wellness checks shows that the PSU is also focused on ensuring the safety and well-being of individuals in distress or need of medical assistance.

Public Intel:

Percentage: 15%

Insight: The least frequent but still relevant is responding to public intel. This indicates that while it's a smaller portion of the PSU's work, responding to tips or concerns from the public remains a part of their operational duties.

Summary of Focus Areas

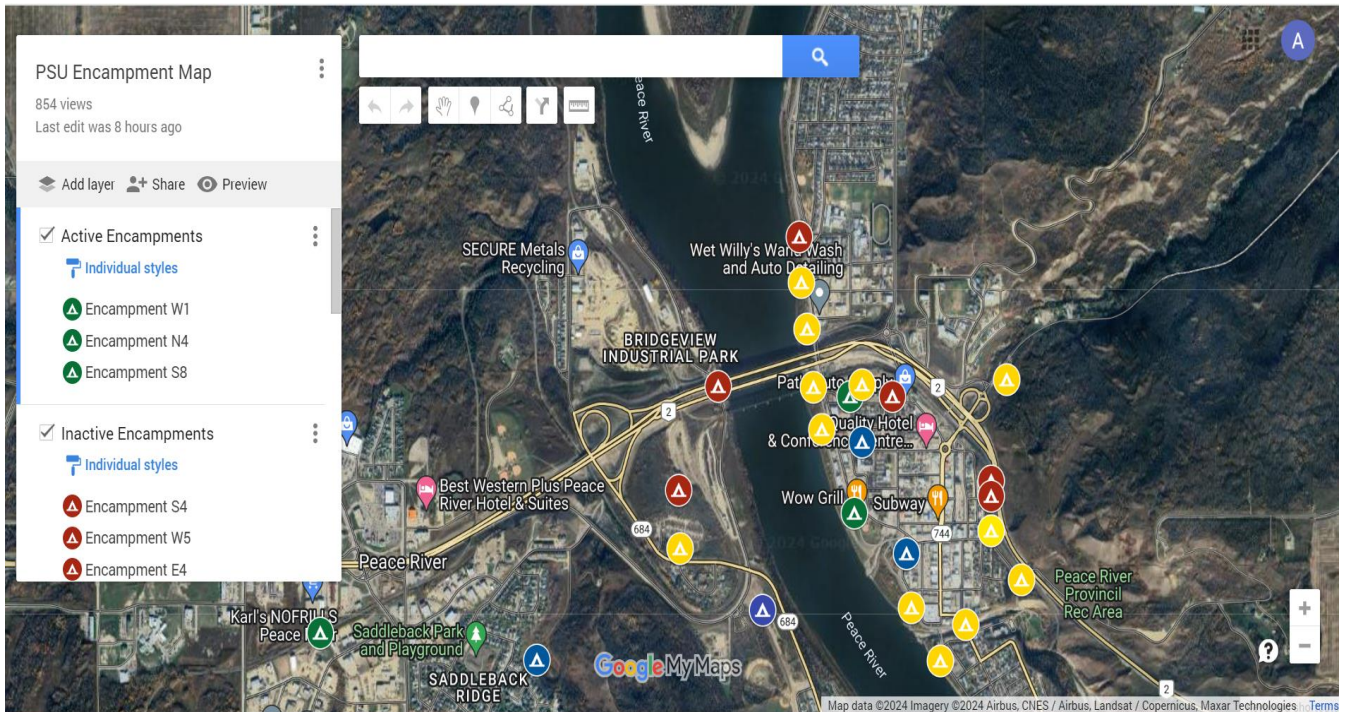
The PSU's efforts are primarily divided among, managing loitering (25%), clearing encampments (35%), and responding to suspicious activities (40%). Wellness checks and public intel each make up 15% of the PSU's activities, reflecting a balanced approach to community safety and well-being.

During the transition from July to August, the Public Security Unit (PSU) observed a notable decrease in encampment activity, highlighting the effectiveness of their ongoing efforts. In July, the PSU conducted 99 visits to encampments over a span of 16 days (just over 6 a day). By August, this number dropped significantly to just 20 visits in 15 days. This substantial reduction is attributed to the PSU team's persistent presence and engagement.

In addition to addressing encampments, and dealing with loitering, the PSU has focused on various community safety initiatives. Their proactive approach included monitoring high-risk areas, responding to medical emergencies, and addressing unauthorized gatherings. The team also tackled community concerns such as noise and suspicious activity, maintaining a strong emphasis on public order and safety.

Overall, the PSU's consistent patrols and strategic interventions have significantly contributed to a safer community environment, with a clear impact on reducing encampments and enhancing overall public security.

Encampment Map



Developed by the PSU over the past month, the Encampment Map is designed to streamline efficiency, safety, and resource management. By providing real-time, color-coded status updates of encampments, it enables swift, informed responses that enhance operational efficiency. GPS coordinates ensure precise location tracking, which improves safety by facilitating accurate dispatch of PSU guards and Emergency Services. The map also optimizes resource allocation by clearly identifying the status of encampments and aiding in better management and cleanup efforts through detailed documentation and photographic records. Overall, this innovative tool significantly enhances the efficiency of encampment management and improves safety and security for the community.

Encampment Map Details

The Encampment Map is a Google Maps-based platform developed to facilitate the tracking of encampment locations, campus status, site descriptions, and GPS coordinates in instances where a physical address is not available. Tent icons are utilized on the map to indicate where an encampment has been identified or where there is a suspicion of an encampment. These icons are color-coded to allow for an immediate and clear understanding of the status of each encampment.

- **Green icons** signify **ACTIVE** encampments, indicating recent activity within the past seven (7) days. New activity includes items being added, removed, or repositioned, person(s) being seen at the location interacting with the encampment, and other signs signifying that the encampment is still being used.
- **Red icons** signify **ABANDONED** encampments, indicating an absence of activity for a period of at least seven (7) days. Meaning no new items have been added, removed, or repositioned and no person(s) have been seen at the encampment within the last 7 days. Notices can be provided at the encampment location stating that the remaining items will be disposed of if not collected within a specified time.

- **Blue icons** represent **POSSIBLE** encampments, which refer to locations where there has been a report of an encampment, but the existence of such has not been confirmed due to either an inability to locate or verify the encampment during initial investigation or pending permission from the property owner to access the premises for further investigation.

- **Yellow icons** indicate encampments that have been vacated and all items have been removed, which includes the removal of tents, garbage, debris, and other abandoned items. Encampments are scheduled for cleanup after the encampment is deemed ABANDONED and if required, cleanup crews are organized to attend.

Location descriptions, along with GPS coordinates, are documented and incorporated into the Encampment Map to provide authorized users with precise information regarding the locations of encampments. In instances where encampments are situated in wooded areas or locations lacking a physical address, GPS coordinates are provided for additional clarity. These GPS coordinates also enable the Apex Security Dispatch Centre to accurately determine the location of PSU Guards, particularly in situations where an incident occurs, and Emergency Services need to be dispatched to the scene increasing guards safety during encampment patrols.

Additionally, photographs are taken of each encampment to assist in the identification of specific locations and to document their current condition. Post-cleanup photographs are also captured to provide a visual comparison of the site before and after remediation efforts. In the event that an encampment is removed but subsequently reappears at the same location, new photographs are taken to document the recent activity, and the status of the encampment is updated to reflect its reclassification as **ACTIVE**.

Further details may be included in the description of each encampment, such as the number of individuals residing at the location, threat levels (particularly if guards have encountered consistent hostile behavior during visits), cleanup dates, and other relevant information. These supplementary details may be incorporated at the request or direction of the town, city, or municipality, as required.

Patrol Vehicle Daily Kilometers Summary

Over the course of one month, from July 15th to August 15th, the Public Security Unit (PSU) patrol vehicle logged a total of 5,348 kilometers. This vehicle is essential to the PSU's operations, providing a visible and mobile presence throughout the community. The patrol vehicle is used by our PSU team to respond to incidents, monitor high-risk areas, and conduct routine patrols aimed at deterring criminal activity and ensuring public safety.

On average, the PSU team drives approximately 172.5 kilometers per day, covering a wide range of areas to maximize their presence and effectiveness. This consistent patrolling plays a crucial role in enhancing the safety and security of the community by allowing quick response times and increasing visibility in neighborhoods, business districts, and other key locations.

PSU Activities and Achievements



The Apex Security Public Security Unit (PSU) has rapidly established itself as a vital component of the community's safety infrastructure within the first month of operation. Our focus has been on creating a visible and accessible presence, building strong relationships with local authorities and residents, and making a tangible impact on the community's well-being. Through dedicated efforts, we have not only enhanced public safety but also contributed significantly to environmental cleanliness and community engagement. The following key achievements and ongoing efforts highlight the strides we've made and our continued commitment to serving Peace River effectively.

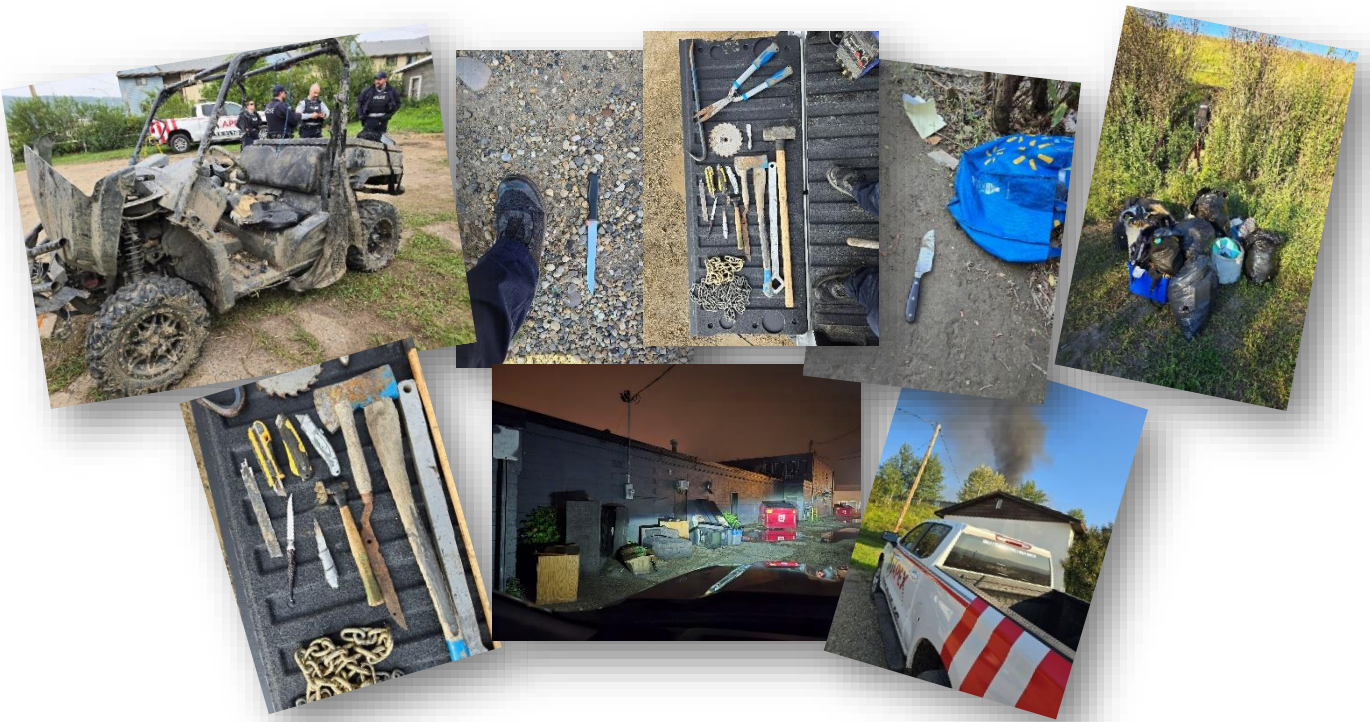
Key Achievements

- **Addressing Loitering:** Proactively managed and addressed loitering issues on town-owned properties and public spaces, ensuring public order and reducing disturbances.
- **Tackling Criminal Activity:** Actively intervened in and responded to criminal behavior and incidents, significantly enhancing community safety.
- **Implementing Proactive Measures:** Implemented preventative strategies, including increased patrols and community engagement, to address issues before they escalate.
- **Visible Presence:** Deployed a branded patrol vehicle, making the PSU easily recognizable and providing a consistent and reassuring presence throughout the community. Our efforts extend to regular foot patrols in the downtown area, as well as coverage of walking paths and parks, further enhancing public safety.

- **Development of the Encampment Map:** a dynamic Google Maps-based platform that provides real-time tracking, status updates, and GPS coordinates of encampments, enhancing accuracy and coordination for cleanup and response efforts.
- **Community Outreach:** Distributed over 250 business cards with PSU contact information, strengthening connections with local businesses and residents, and improving accessibility to our services.
- **Enhanced Patrols:** Introduced two e-bikes to improve patrol coverage in parks and along walking paths, allowing for quicker response times and greater mobility in challenging areas.
- **Public Awareness:** Installed informative signage in parks and walkways, providing clear instructions for contacting the PSU and actively engaged with residents to explain our role and duties, enhancing overall public safety and awareness.
- **Cleaning up Encampments:** Effectively removed temporary or unauthorized encampments from various locations, contributing to both cleanliness and safety.



Impact & Ongoing Efforts



- **Environmental and Safety Impact:** In collaboration with public volunteers, we have removed over 140 cubic meters of garbage from encampments and public spaces. Additionally, our efforts have led to the removal of numerous hazardous items, including tools, weapons, knives, drugs, and needles, further enhancing community safety.
- **Community Feedback:** Received overwhelmingly positive feedback from residents and businesses, reflecting growing trust and confidence in the PSU's role in enhancing public safety.
- **Comprehensive Support:** Established robust partnerships with local authorities, including RCMP, EMS, and the Fire Department, allowing us to assist in various emergencies and community needs.
- **Proactive Patrols:** Conducted regular patrols in high-priority areas, including parks, business districts, and known encampment locations, to deter criminal activity, assist residents, and maintain a visible security presence.
- **Responsive Services:** Actively responded to incidents, including loitering and unauthorized encampments, while collaborating with local agencies to address broader safety concerns.
- **Engagement & Education:** Engaged with the community to educate residents and businesses on safety practices, while continuously adapting our services based on community needs and feedback.

Conclusion

In conclusion, the Public Security Unit (PSU) has made a significant impact in Peace River in just 30 days, receiving positive feedback from the community and local businesses. Our consistent and proactive patrols, bolstered by the recent addition of e-bikes, have served as a visible deterrent to criminal activity and provided a reassuring 24-hour presence. The deployment of our branded patrol vehicle has further enhanced our visibility, instilling a sense of safety and security within the community.

Our efforts to manage and clear encampments have been highly effective, leading to the removal of numerous hazardous items such as tools, weapons, knives, drugs, and needles. In collaboration with community volunteers, we have removed over 140 cubic meters of garbage, significantly improving the cleanliness and safety of public spaces.

We have actively supported local businesses, offering assistance where needed and maintaining a strong presence in the downtown area through foot patrols during key events and daily activities. This engagement has fostered a supportive network and reinforced our commitment to community well-being.

As we continue to address critical issues through proactive patrols and encampment management, we remain committed to supporting and enhancing community well-being. The positive feedback and ongoing engagement affirm the value of the PSU's contributions to Peace River, and we look forward to building on these successes.





OUR FAMILY SECURING YOURS

Vision

"To strengthen community safety in Peace River by providing vigilant security and fostering collaboration with local businesses and the community, ensuring a secure and thriving environment for all"

Mission Statement

"Apex Security's primary purpose is to enhance community safety and security by delivering reliable, proactive, and responsive security services that protect people, property, and businesses. We are dedicated to building safer environments through innovative solutions and strong partnerships with local communities.

Prepared by: Darcy Chamberlist

Approved by: Allen Gukert

Date: August 22nd, 2024



**Head Office and
Dispatch**
9916 100 Avenue
Grande Prairie, Alberta
780-830-0288

**Service & Training
Centre**
10702 100 Street
Grande Prairie, Alberta

**Branch Office Peace
River**
10501 77th Street
Peace River, Alberta
780-624-9574